



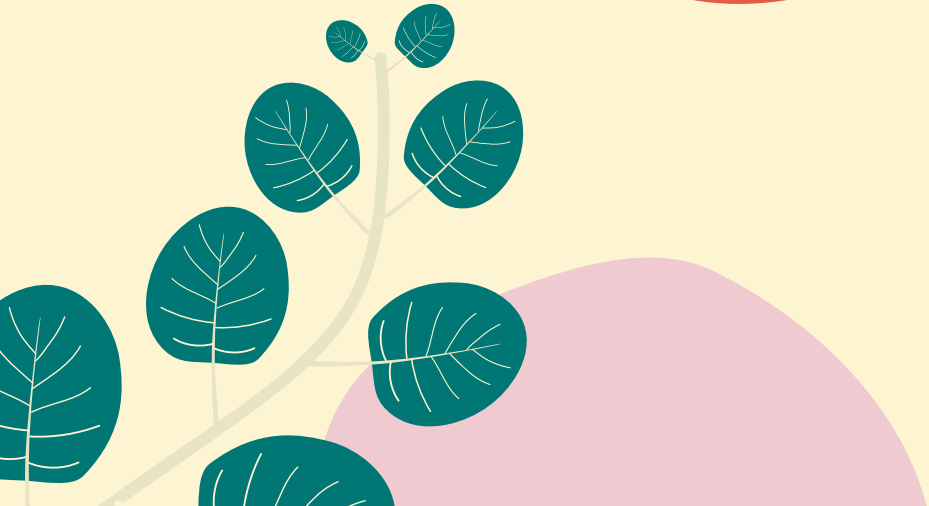
# Golden Rise

B E N D I G O

MAKE YOURSELF AT HOME



**STAGE 2  
SELLING  
NOW**



A seniors living  
community by



# Discover a new way of life when you move to Golden Rise. Stage 2 offers residents a stylish, low-maintenance lifestyle with like-minded neighbours.

Golden Rise Seniors Living Community is located on an elevated site with picturesque views of the surrounding district, and set within landscaped gardens featuring native plants and trees.

Enjoy easy access to nearby shopping centres, recreational and healthcare centres, with even more choice available in Bendigo CBD — just a short drive away.

In Bendigo, meet friends for coffee in one of the many cafes on View Street. Wander a little further down the street and you will find yourself in the heart of Bendigo's arts and culture precinct. Enjoy a spot of shopping and discover the creations of local artisans or meander through the Bendigo Botanic Gardens, Bendigo Creek Trail or around Lake Weeroona.

With Bendigo Railway Station providing regular V/Line services, it offers the perfect opportunity for day trips to nearby towns like Castlemaine, Kyneton and Woodend, in addition to convenient travel options to Melbourne.

Live independently with a sense of security and peace of mind, knowing you can access personalised care and support — housekeeping, home maintenance, transport and home care services — if you would prefer a helping hand.

Enjoy a vibrant, easy-living retirement with a community of new friends at Golden Rise.



Bendigo Historic Post Office







Images are for illustrative purposes only and while generally typical, minor variations may apply. Furniture is not included



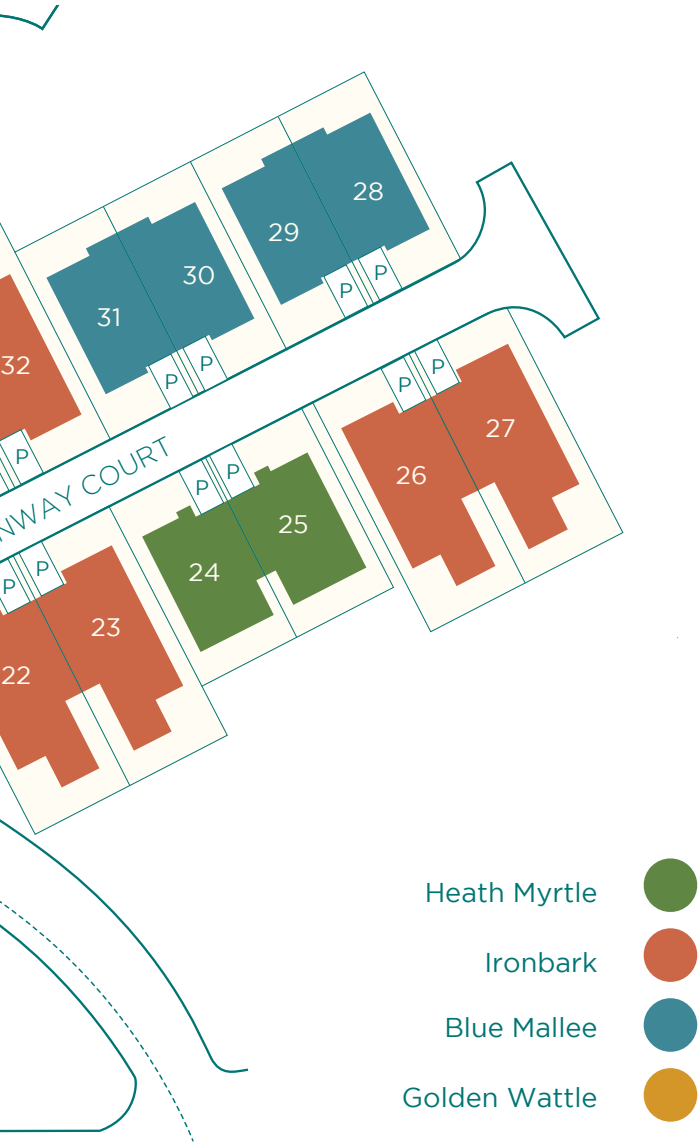
Lake Weeroona





# Stage 2 homes & local area.





- Heath Myrtle
- Ironbark
- Blue Mallee
- Golden Wattle

Located in Golden Square, Golden Rise is bordered by Specimen Hill Road and Taylor Street, about three kilometres from the centre of Bendigo. It is here that Bendigo's gold rush movement first began in 1851, making it one of the world's richest cities.

Golden Square is a thriving suburb with a full range of conveniences, including a variety of shops, wellbeing centre, pubs and cafes. With a bus stop just around the corner from Golden Rise, you can be in Bendigo in minutes.

Golden Rise Stage 2 development boasts 22 brand new units with a mix of two and three bedroom homes.

Enjoy open-plan living, modern kitchen appliances and bathrooms, split-system heating and cooling, a six-star energy rating, secure gardens, and private gardens — in a range of floorplans perfect for your lifestyle and budget.

With flexible and competitive contracts available, you can take advantage of a rich heritage of care that dates back to 1876 when the Sisters of Mercy first arrived in Bendigo.





# Living at Golden Rise.

## YOUR HOME

Golden Rise Stage 2 offers a selection of contemporary two and three-bedroom homes, featuring open-plan living areas, secure garages and private gardens. Each of the four floor plans have been designed for comfort and ease of living. Choose the one that best suits your lifestyle and budget.

You will enjoy:

- low-maintenance living
- quality, modern fittings
- contemporary kitchen with quality appliances, including a dishwasher
- carpeted bedroom and living areas or vinyl floorboards
- a secure garage
- comfort all year round with reverse-cycle heating and cooling

- spacious design with room to relax
- an environmentally sustainable home built with considered construction materials, a six-star energy rating, double-glazed windows and rainwater tank
- wholesale electricity prices
- your own street address.



Images are for illustrative purposes only and while generally typical, minor variations may apply. Furniture is not included





Golden Rise is more than just a home. You will discover a place that provides an enviable location for your retirement where you can feel confident all your needs will be met, now and in the future, including:

### YOUR COMMUNITY

Enjoy the meaningful contact and interaction that comes with living in a community of like-minded people. You won't need to go far to meet up with neighbours and friends for drinks or a barbecue.

### YOUR LIFESTYLE

Enjoy a fulfilling lifestyle at Golden Rise. Living in a community provides a range of benefits including social connections and activities, companionship and a sense of security.

### YOUR SAFETY

Feel secure at Golden Rise with a 24-hour emergency response system and if you're heading away, feel safe knowing there will be others around to keep an eye on your home.

### YOUR FLEXIBLE SERVICES

Choose extra assistance and support if and when you need it. Additional services can be tailored to suit your individual needs on a 'pay-as-you-go' basis, so as your needs change, so can the services you receive.

### YOUR ADVANTAGE

You get more than just a home when you purchase the lease of your unit. Enjoy the benefits of being able to access common areas and facilities, as an extension of your home.

### YOUR CHOICE

Golden Rise offers a range of financial options to suit your lifestyle and budget.

### YOUR CARE AND SUPPORT

If you need additional support to live independently, we can help you access personalised care including assistance with day-to-day tasks or complex medical support.

### YOUR PEACE OF MIND

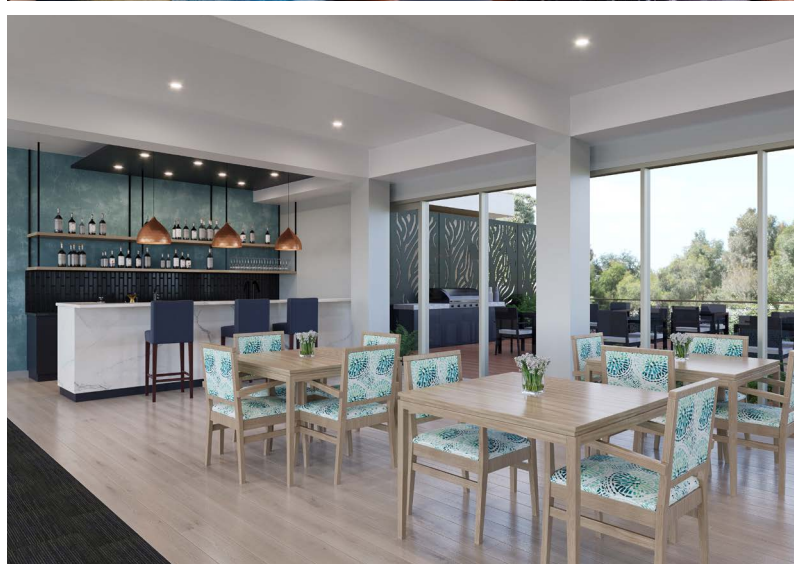
Golden Rise is located beside Mercy Health Bethlehem Home for the Aged, which means you have access to some of its facilities such as the cafe and chapel. Co-location offers peace of mind to those who are thinking ahead to when they or their partner might need a higher level of care.

Live at Golden Rise and discover a new home, caring community and a whole new outlook on life.



Images are for illustrative purposes only and while generally typical, minor variations may apply. Furniture is not included





## YOUR COMMUNITY HUB

Just a short stroll from your home is the Golden Rise community hub which includes a club lounge, bar and outdoor entertainment area for you to enjoy with family and friends. This space is an extension of your home and the perfect place to connect with the Golden Rise community.

Images are for illustrative purposes only and while generally typical, minor variations may apply. Furniture is not included

**Golden Rise**  
BENDIGO

2 Taylor Street, Golden Square, Vic 3555

p: 1300 112 732 | e: [goldenriseenquiries@mercy.com.au](mailto:goldenriseenquiries@mercy.com.au)

[www.goldenrisebendigo.com.au](http://www.goldenrisebendigo.com.au)

A seniors living  
community by

